

## MEET OUR TEAMS



The Audiology Service at the UW Medical Center Otolaryngology – Head and Neck Surgery Center is dedicated to the identification, assessment and rehabilitation of patients with hearing and balance disorders.

Our audiologists function as independent practitioners who see patients referred for hearing evaluations and hearing rehabilitation services. Our audiologists also work as part of the otology/neurotology team to provide hearing and balance function assessments that assist our otologists in the diagnosis of hearing and balance disorders. Through active research programs, we are continually investigating new and better ways to assess hearing and provide state-of-the-art rehabilitation.

### *Audiologists*



**SARAH BENCH, Au.D.**

*Audiologist*  
Diagnostic Audiology  
Newborn Hearing Assessment  
Hearing Aids/Baha Implants



**HEIDI MACKENZIE, M.S.**

*Audiologist*  
Diagnostic Audiology



**ELYSE JAMEYSON, M.A.**

*Audiologist*  
Cochlear Implants  
Newborn Hearing Assessment  
Diagnostic Audiology



**ERIC MARTINEZ, Au.D.**

*Audiologist*  
Hearing Aids  
Diagnostic Audiology

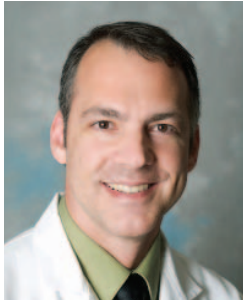
*(over)*



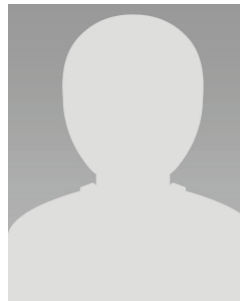
**DEBRA JOHNSON, M.A.**  
*Audiologist*  
Diagnostic Audiology  
Hearing Aids



**CAROLYN TOOLEY-YOUNG, Ph.D.**  
*Audiologist*  
Newborn Hearing Assessment  
Baha Implants



**KEVIN KIEMELE, M.S.**  
*Audiologist*  
Diagnostic Audiology  
Evoked Auditory Potentials



**TINA WORMAN, M.S.**  
*Audiologist*  
Cochlear Implants

### *Dizziness and Balance Center*



The Dizziness and Balance Center is a specialty service affiliated with the UW Medical Center's Otolaryngology – Head and Neck Surgery Center. We combine the resources of nationally recognized programs in otolaryngology – head and neck surgery, rehabilitation medicine, ophthalmology, and neurology to provide an integrated multidisciplinary approach to the treatment of balance disorders. Through active research programs, we are continually developing new and better ways to diagnose and treat balance problems.



**JAMES O. PHILLIPS, Ph.D.**  
*Research Associate Professor*  
*Director - Dizziness and Balance Center*  
Vestibular Assessment



**BARRY LIA, Ph.D.**  
*Vestibular Technician*  
Vestibular Assessment