

MEET THE COLORECTAL SERVICES TEAM LEADERS

The UW Medicine Digestive Health Institute offers world-class expertise and coordinated comprehensive patient care in all areas of digestive wellness. Our multidisciplinary team of healthcare professionals and research scientists collaborate to maintain and promote gastrointestinal health, advance the standards of care and conduct leading-edge medical discovery.



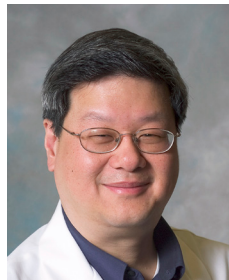
ANTHONY BACK, M.D.

UW professor of medicine, Division of Oncology

Board-certified: internal medicine, medical oncology, hospice and palliative medicine

Specialties: gastrointestinal oncology, physician communication, ethical issues, palliative care

Research interests: physician-patient communication



WUI-JIN KOH, M.D.

UW professor of radiation oncology
Board-certified: radiation oncology

Specialties: gynecological and gastrointestinal cancer, radioactive implant brachytherapy

Research interests: combined chemo-radiation strategies, cancer management guidelines, role of imaging in radiotherapy and cancer care



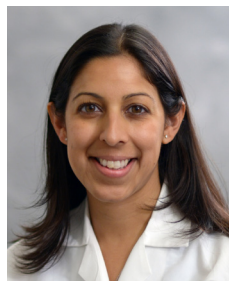
ALESSANDRO FICHERA, M.D.

UW professor of surgery, Division of General Surgery

Board-certified: general surgery, colon and rectal surgery

Specialties: minimally invasive procedures to treat colorectal cancers, inflammatory bowel diseases, pelvic floor disorders

Research interests: inflammatory bowel disease, minimally invasive and robotic-assisted surgery, prevention and treatment of colorectal cancers



MUKTA KRANE, M.D.

UW associate professor of surgery
Board-certified: general surgery, colon and rectal surgery

Specialties: colon and rectal surgery, minimally invasive surgery, colorectal cancer, pelvic floor disorders, inflammatory bowel disease, complex anorectal disorders, anorectal ultrasound, anal manometry

Research interests: quality of life changes resulting from treatment for colorectal disorders, outcomes-based research in colorectal diseases



JOHN M. INADOMI, M.D.

UW professor of medicine, Division of Gastroenterology

Board-certified: gastroenterology

Specialties: gastrointestinal medicine, Barrett's esophagus, esophageal cancer, colorectal cancer

Research interests: novel strategies and screening to reduce mortality from esophageal adenocarcinoma, enhancing adherence to screening for colorectal cancer, health services and outcomes research

(over)



For referral or appointment

Call the UW Medicine Contact Center at 206.520.5000.



ERIN O. LANGE, M.D.

UW clinical assistant professor of surgery
Board-certified: general surgery

Specialties: treatment of colorectal cancers, inflammatory bowel disease, benign anorectal diseases, pelvic floor disorders

Research interests: surgical outcomes in benign and malignant colorectal conditions



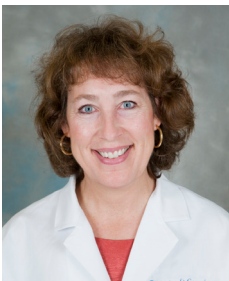
MIKA SINANAN, M.D., PH.D.

UW professor of surgery, Division of General Surgery

Board-certified: general surgery

Specialties: gastrointestinal surgery with emphasis on oncology, inflammatory bowel disease, diseases of the colon and rectum

Research interests: video-endoscopic and robotic-assisted surgery, surgical simulation training for quality improvement



GRETCHEN LENTZ, M.D.

UW professor of obstetrics and gynecology
Board-certified: obstetrics and gynecology, female pelvic medicine and reconstructive surgery

Specialties: urogynecology (pelvic floor reconstructive surgery for incontinence and prolapse, da Vinci robotic-assisted surgery, urinary incontinence)

Research interests: evaluating surgical training for residents in obstetrics and gynecology



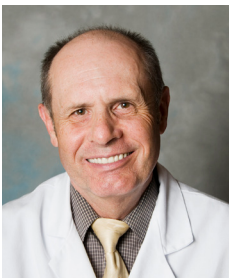
SUZETTE SUTHERLAND, M.D., M.S.

UW associate professor of urology

Board-certified: urology, female pelvic medicine and reconstructive surgery

Specialties: minimally invasive treatment for urinary incontinence, bladder dysfunction and pelvic organ prolapse including transvaginal approaches, da Vinci robotic-assisted surgery, urethral diverticulum, urinary fistula, neuromodulation for urinary and fecal incontinence

Research interests: patient-centered outcomes following emerging medical and surgical treatments for incontinence and prolapse concerning efficacy, safety and quality of life improvements



WILLIAM SHUMAN, M.D.

UW professor of radiology
Board-certified: diagnostic radiology

Specialties: body magnetic resonance and computed tomography (CT) imaging, cardiac CT, ultrasound, low-dose technique for CT for cardiac/vascular conditions

Research interests: low dosage CT techniques, CT of cardiac patients in emergency care, colorectal neoplasms



MELISSA P. UPTON, M.D.

UW professor of pathology

Board-certified: anatomic pathology, cytopathology

Specialties: gastrointestinal and liver pathology, genitourinary pathology, cytopathology, application of immunohistochemical and molecular markers in diagnosis and research

Research interests: gastrointestinal tumors and differentiation, neoplasia, cytopathology, gastrointestinal and pancreatobiliary tract pathology and neoplasia, chronic liver disease, oral cancer