

UW Medicine

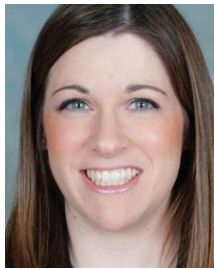
MEET OUR PROVIDERS

At the UW Medicine Multiple Sclerosis Center, patients receive care from a multidisciplinary team of specialists with education and experience in management of MS and other related conditions. Our MS-trained providers include neurologists, physiatrists, a neurology nurse practitioner, a rehabilitation nurse practitioner, nurses, psychologists, vocational and rehabilitation counselors, and pharmacists. We work together to bring you comprehensive care.

Clinic visits may alternate between your physician and a nurse practitioner to ensure prompt care that meets your needs at all times. A clinic coordinator helps to organize scheduling for complex needs. An infusion suite is located onsite for your convenience. We can offer high-quality MRI imaging here on campus.

***Kevin Alschuler, Ph.D.***

Alschuler is the Rehabilitation Psychologist for the UW Medicine Multiple Sclerosis Center who helps patients better cope with the MS diagnosis and symptoms, improving function and quality of life and their management of chronic pain. He is also an active researcher on similar topics in the Department of Rehabilitation Medicine. Alschuler received his Ph.D. from Eastern Michigan University and completed his residency at the Boston Consortium of Clinical Psychology (VA Boston / Harvard Medical School / Boston University School of Medicine).

***Meghan Beier, Ph.D.***

Beier is a rehabilitation psychologist currently undergoing MS-fellowship training. She helps patients reduce emotional distress caused by the MS diagnosis and ongoing symptoms. She has special training in assessing and diagnosing MS-related cognitive difficulties. Beier received her Ph.D. from Yeshiva University and completed her residency in neuropsychology at the Baltimore Psychology Internship Consortium. She has worked with MS patients since 2008.

***Lynda Hillman, ARNP***

Hillman is a certified adult and family nurse practitioner. Her background in primary care and community health ensures a holistic approach to her patients. She is an enthusiastic believer in the power of rehabilitation to improve or maintain functioning at optimum levels. She has worked with MS rehabilitation providers since 2007. Hillman earned her undergraduate and graduate degrees from the University of Washington.

***Shana Johnson, M.D.***

Johnson, co-director of the center, is a rehabilitation-medicine physician who specializes in the treatment of multiple sclerosis. Her goal is to optimize patients' function and quality of life when they face walking problems, thinking problems, fatigue, spasticity and bladder and bowel symptoms.

Johnson is an assistant professor in UW's Department of Rehabilitation Medicine. She received her medical degree from the Medical College of Wisconsin and completed a physical medicine and rehabilitation residency at the University of Texas Southwestern Medical Center. She completed a multiple sclerosis fellowship at UW Medical Center and joined our Multiple Sclerosis Center in 2011.



Hillary Lipe, ARNP

Lipe is a certified nurse practitioner who cares for people who experience a variety of conditions affecting the nervous system, including inherited disorders. Her clinical interests include headache and multiple sclerosis. She sees the patient as the main focus of care. Her experience in neurogenetics and chronic illness has prepared her to educate patients about options for care and lifestyle choices, and to provide guidance in making informed choices about treatment. Lipe also is a teaching assistant in UW's Department of Neurology.



Gary Stobbe, M.D.

In practice since 1993, Stobbe joined UW as a clinical assistant professor of neurology and psychiatry in 2008. He is a faculty member of the MS center and directs adult transition services at Seattle Children's Autism Center. His philosophy is to optimize health in the presence of neurological illness and to maximize an individual's potential through the patient-physician partnership.



Joe Stuckey, M.S., C.R.C.

Stuckey is a nationally certified rehabilitation counselor with more than 15 years of clinical experience at UW Medical Center. He assists individuals and their families with employment, education, activity planning, advocacy and adjustment to disability. He provides comprehensive rehabilitation counseling services throughout the UW Medicine system.



Annette Wundes, M.D.

Wundes, co-director of the center, is an MS-fellowship-trained neurologist with special expertise in multiple sclerosis and other demyelinating diseases. She enjoys working with patients, engaging them in a comprehensive care approach and focusing on differentiating MS from other medical conditions. Her main research interests are treatment options for patients with severe or worsening MS, as well as women's health issues in MS.

Wundes is a UW assistant professor of neurology and an adjunct assistant professor of rehabilitation medicine. She has also served on the UW's Institutional Review Board since 2003. She graduated from Heinrich-Heine-University Medical School in Düsseldorf in her native Germany.

For more information

Cricket McCleary, clinic manager: 206.598.8668, cricket1@uw.edu