



GME Councils

Moderator – John Boston, DO

Idaho – Ted Epperly, MD

Montana – Rob Stenger, MD, MPH

New Mexico – John Andazola, MD



Idaho Graduate Medical Education Committee

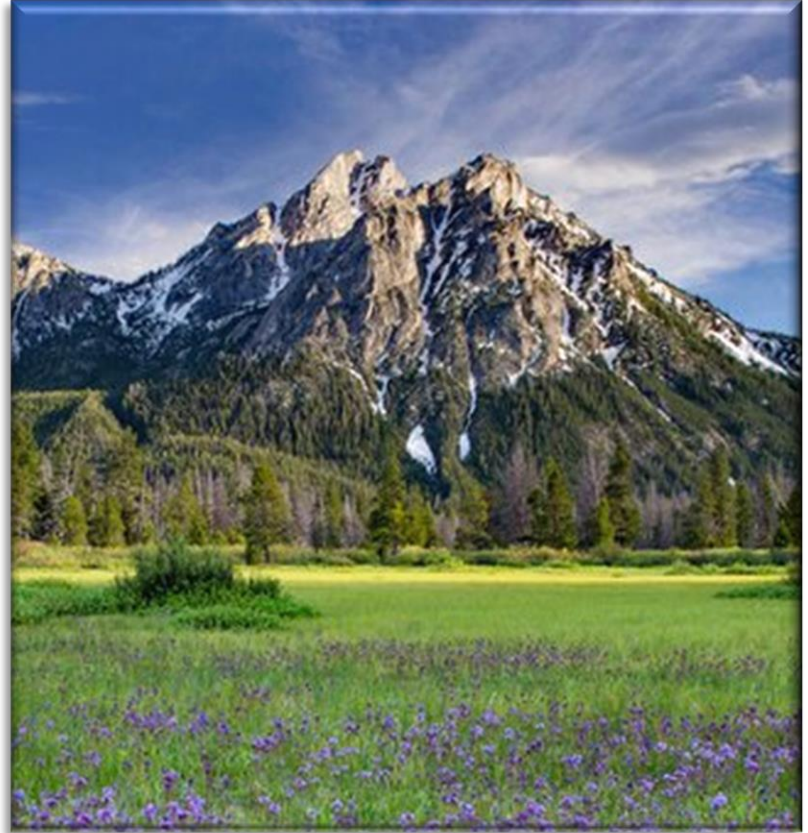
April 25, 2024

Ted Epperly, MD

President, CEO, & DIO | Full Circle Health | Boise, Idaho
GME Coordinator | State Board of Education

Idaho GMEC History

- Governors Task Force – “GME Greatest Need”
- Ten Year GME Strategic Plan – 2017
- Idaho GMEC
- State Board of Education
- Bipartisan Support



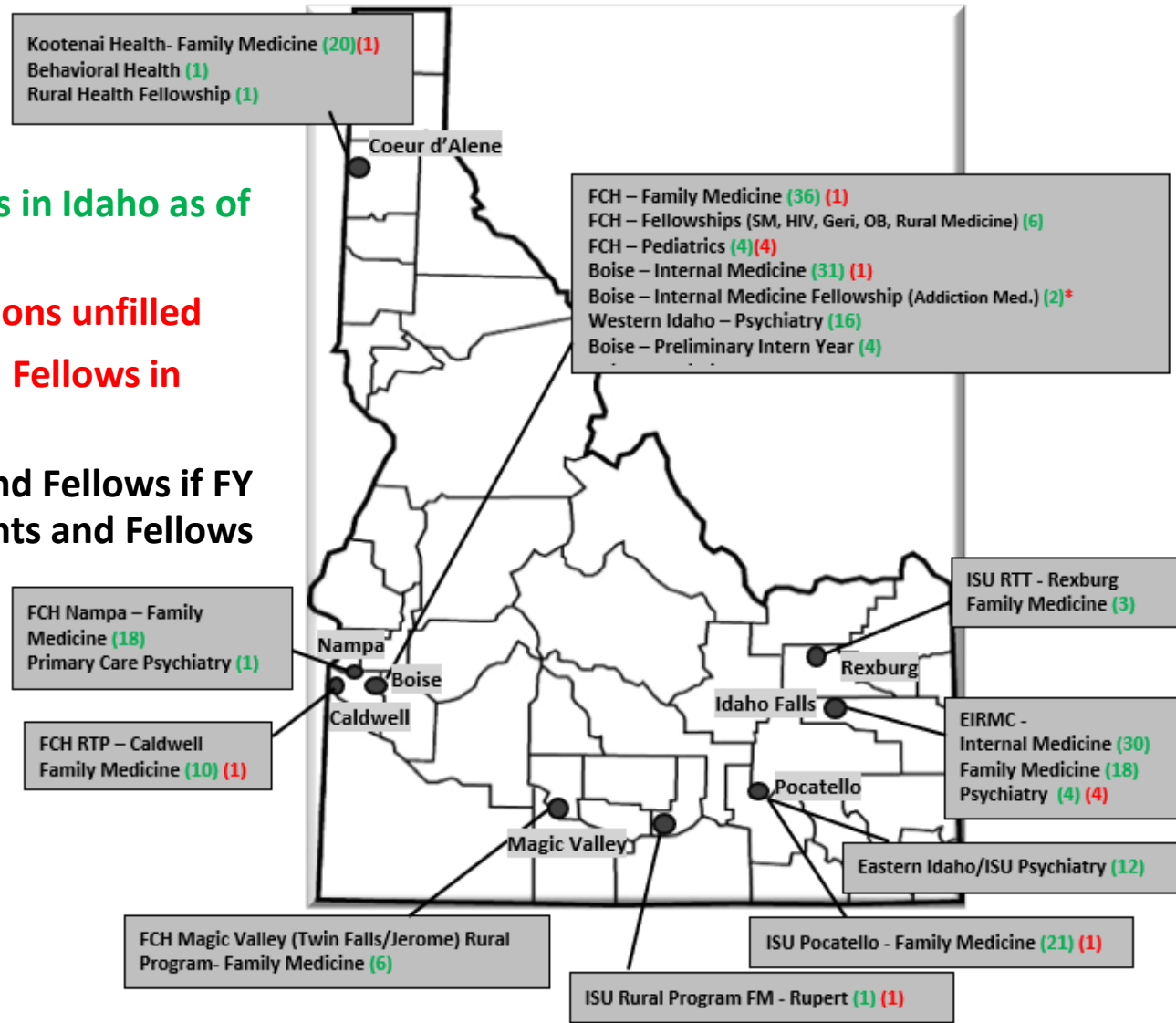
GME Programs and Resident and Fellow Locations in Idaho as of April 25, 2024

Current Resident and Fellows in Idaho as of
July 1, 2023 = 248

***2 Addiction Medicine positions unfilled**

**Potential New Residents and Fellows in
Idaho as of July 1, 2024 = 14**

**Total number of Residents and Fellows if FY
2025 budget for new Residents and Fellows
approved = 262**



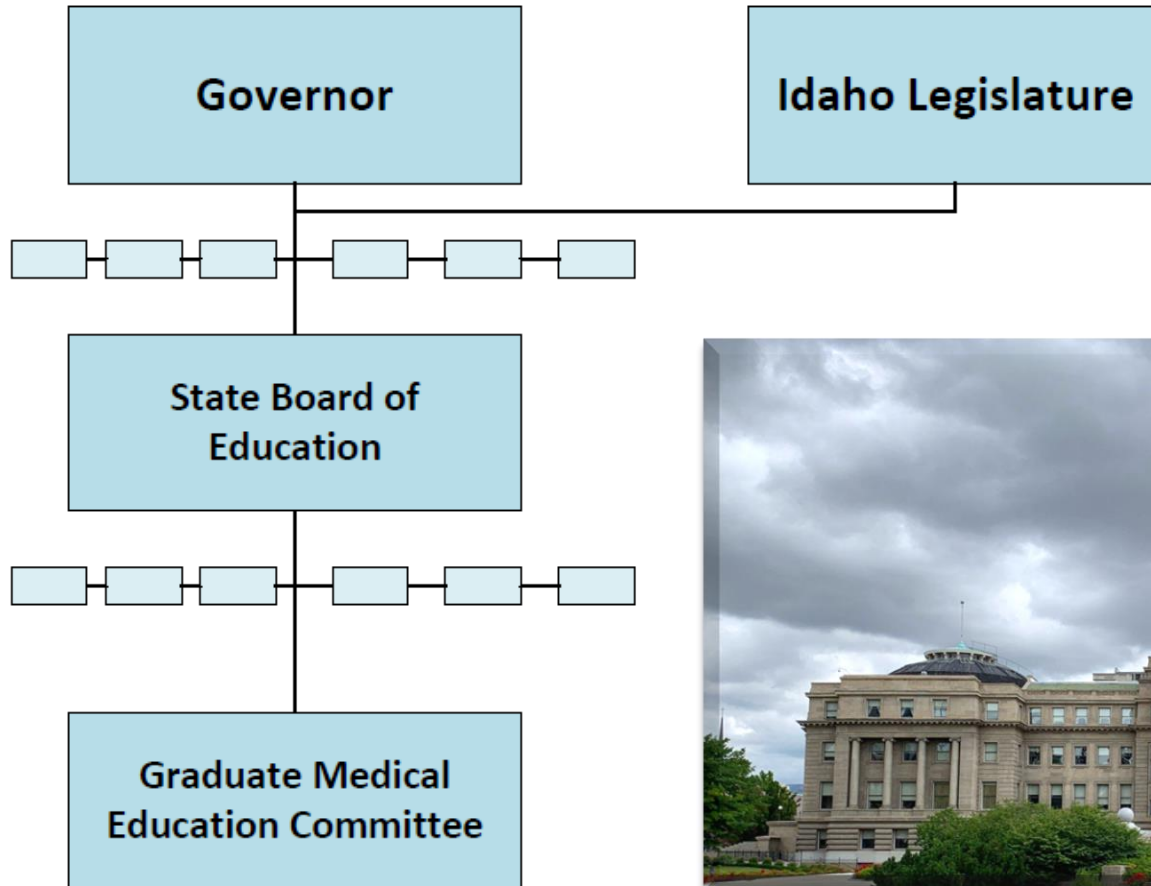
Idaho GMEC

Structure

- 33 members
 - Program Directors
 - Sponsoring Institution Representative, DIO, C-Suite
 - Idaho Medical Association (IMA)
 - Idaho Hospital Association (IHA)
 - Idaho State Board of Education (SBOE) - Executive Director, CFO
 - Medical Schools – UW, UU, ICOM
- Quarterly
- Executive Committee – Chair, Vice-Chair, GME Coordinator, SBOE Exec. Director



GOVERNANCE AND AUTHORITY





Functions of Idaho GMEC

- Charter
- Team – Speaks with One Voice
- Encourages / Promotes GME Growth / Expansion
- Sets Annual Budget Request
- Resource for SBOE/ Governor / Legislature / IMA / IHA
- Funding – (Workshops, Travel, GME Coordinator)

Successes / Challenges

Successes

- Grown GME from 9 to 16 programs and 9 Fellowships
- Grown Residents and Fellows from 134 to 262
- Seen as State's Expert Resource / 10-Year Plan – Strategic Blueprint
- Speak with One Voice
- Tremendous Bipartisan Support



Challenges

- Politics – GME
- Politics – Healthcare
- Rogue Institutions / Programs



Montana's GME Council

April 2024

Rob Stenger, MD, MPH

*Chair
Montana GME Council*

*Program Director
Family Medicine Residency of Western Montana*

Acknowledgements

Jay Erickson, MD

MT WWAMI Clinical Dean and Founding Chair, MT GME Council

Barry Kenfield

CFO Emeritus, Family Medicine Residency of Western Montana

Past Chair, MT GME Council

Cindra Stahl

Senior Program Manager, MT Office of Rural Health and Staff, MT GME Council

State of GME in Montana

Montana Family Medicine Residency

Founded 1996, 8-8-8, Billings

Family Medicine Residency of Western Montana

Founded 2013, 10-10-10, Missoula and Kalispell

Billings Clinic Internal Medicine Residency

Founded 2014, 8-8-8 categorical, 4 prelim, Billings

Billings Clinic Psychiatry Residency

Founded 2019, 3-3-3-3, Billings

Montana ranks:

5th in resident retention (63.4%)

48th in residents per capita

6th in aging physician workforce (37.9%)

All but 5 Montana counties have
health profession shortage areas for
primary care

Sources: AAMC Report on Residents (2023), AAMC State
Physician Workforce Data Report (2021), MT DPHHS HP
SA Designations (2022)

History/Structure of the GME Council

Founded in 2011 while MT's 2nd residency was in development

Staff support from the MT Office of Rural Health/AHEC

Voluntary coalition of interested parties, no government mandate or funding

GME Council Purpose and Responsibilities

To improve the healthcare of Montanans by building the state's physician workforce, through the identification of approaches to support, advocate and grow Graduate Medical Education within Montana.

Council Responsibilities:

- Track, measure and make recommendations regarding the physician workforce and MT GME needs
- Help coordinate new MT GME program development
- Seek financial support to sustain and expand MT GME
- Work with GME programs to maintaining high quality GME experiences
- Advocate and effectively communicate the value and benefits of a robust MT GME effort

Council Membership

5 Teaching Hospitals

CEOs or CMOs, Financial Staff, Education Staff

4 Residency Programs

Program Directors

Medical Schools

MT WWAMI

Montana College of Osteopathic Medicine, Rocky Vista University

Touro University College of Osteopathic Medicine, Montana

Professional Societies

Montana Hospital Association

Montana Medical Association

Montana Primary Care Association

Governmental Agencies

MT AHEC and Office of Rural Health

Montana Department of Health and Human Services

Office of Commissioner of Higher Education

Montana VA

Indian Health Service

Other Interested Parties

Programs in Development

GME-interested Hospitals and Clinics

Financing, Administration and Governance

Annual Budget of about \$60,000, primarily funds a part time staff person employed by AHEC/Office of Rural Health

Funded entirely by member dues:

- \$8,000 per teaching hospital
- \$4,000 per residency program
- \$1,000 for other voting member organizations

Executive Committee (Chair, Vice Chair, Secretary-Treasurer, past Chair) appointed by Council

Standing Sub-Committees: Workforce/Data, Advocacy, Finance

Major Activities/Accomplishments

GME Growth

3 New Residencies since 2013 (FM, IM, Psych)

3 Residency Expansions (FM, IM, Psych)

2 Rural Surgery Tracks in development

2 New Residencies (IM, FM) in development

1 New Rural Track (FM) in development

Goal to double the #of incoming residents by 2030

GME Financing

Successfully advocated for increasing state GME appropriation in 2015 and 2017

Revised State GME allocation formula and rules

Workforce

All MT programs share a rural workforce mission and focus

Future Activities

Continue to support GME growth and collaboration among residency programs, teaching hospitals, medical schools and other interested parties.

Advocate for increased state funding to keep pace with GME growth.

Advocate for state policies that will increase teaching capacity or impact residents
(examples: preceptor tax credit, resident licensure issues)

Advocate for federal policy changes that support true Rural GME growth

GME Strategic Plan for MT?

New Mexico Consortium and GME Expansion Board Development

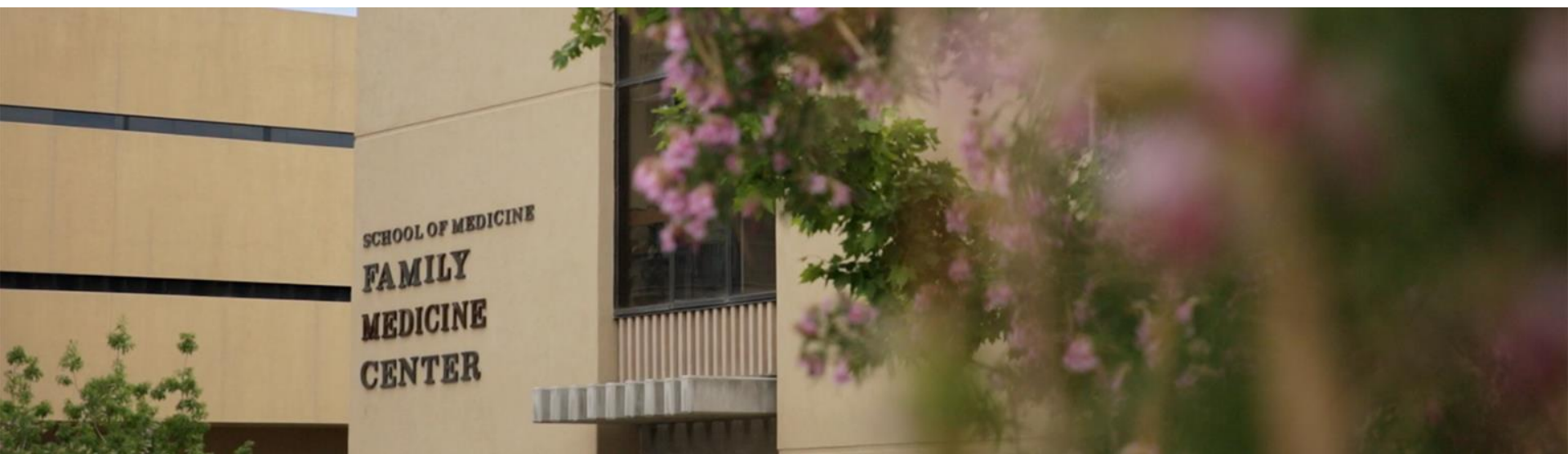
John Andazola, MD FAAFP

Disclosures

This project is supported, in part, by the Health Resources and Services Administration (HRSA) of the U.S. Department of Health and Human Services (HHS) under grant number D06RH27774, “Rural Health Network Development Program,” total award \$900K, with 25 percent of program funded by state and nongovernmental sources. This information or content and conclusions are those of the author and should not be construed as the official position or policy of, nor should any endorsements be inferred by HRSA, HHS or the U.S. Government.



SCHOOL OF
MEDICINE



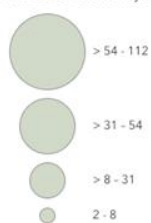


Eastern New Mexico Family Medicine Residency Program



Legend

Number of residency spaces per county



Primary Care Health Professional Shortage Areas in New Mexico - Updated Daily by HRSA

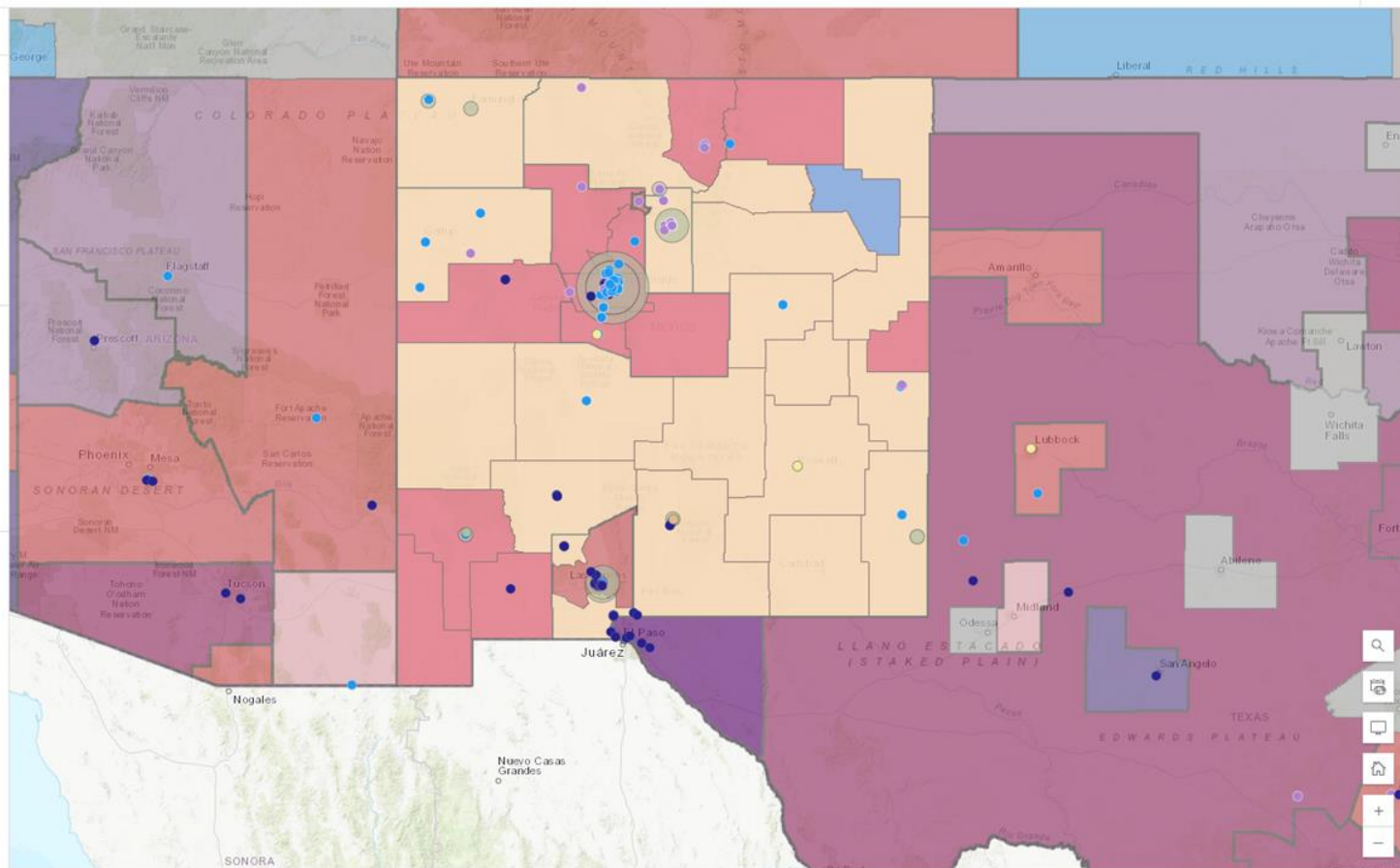
HPSA Priority

- Highest priority for assignment of Clinicians (Red square)
- Medium priority for assignment of Clinicians (Yellow square)
- Lowest priority for assignment of Clinicians (Blue square)

Migration of Healthcare Workers with Higher Education into and out of New Mexico, 2021

Relationship

- Bachelor's or Advanced Degree, Leaving New Mexico (Arrow pointing away from NM)
- Workers with Bachelor's or Advanced Degree, coming into NM (Arrow pointing into NM)
- Other (Grey square)





NEW MEXICO ACADEMY OF
FAMILY PHYSICIANS

STRONG MEDICINE FOR NEW MEXICO



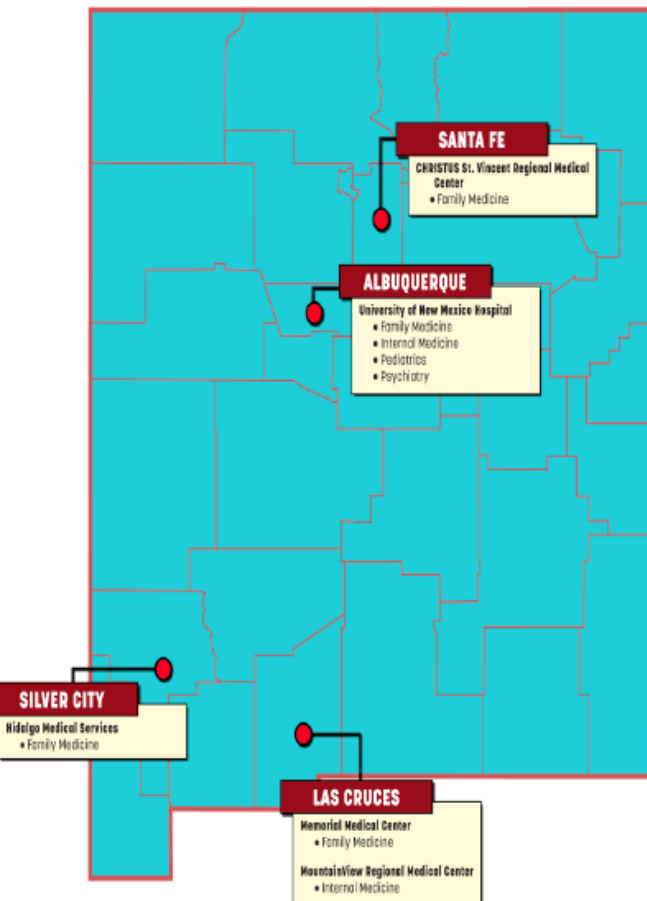
NEW MEXICO
PRIMARY CARE
TRAINING
CONSORTIUM

Formalization of the Consortium

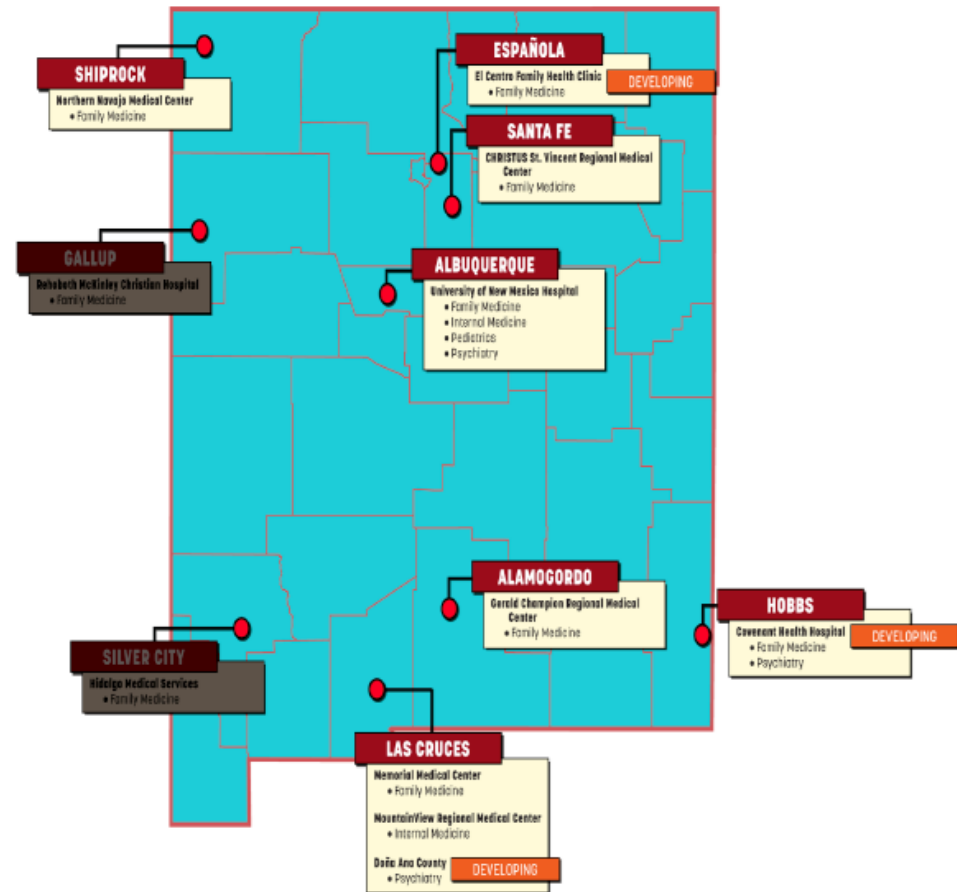
- 2011-- Formation of Board
- 2013 -- Incorporation as 501(c)3
- 2014 -- ORHP Network Planning Grant
- 2016 -- Establishment as ACGME Sponsoring Institution
- 2017- 2019 -- Changes to SPA for Medicaid GME
- 2019 -- Passage of HB 480
 - GME Expansion Board under the direction of Secretary of HSD
- Present -- largely funded by State through HSD to meet objectives of HB 480

GME PROGRAM CHANGES SINCE 2019

RESIDENCY PROGRAMS IN 2019



RESIDENCY PROGRAMS IN 2022



Investing for tomorrow, delivering today.

Thank you!